

# **IFConneX RELEASE ENGINE**

# IFConneX RELEASE ENGINE

---

## ARE YOU MISSING ACCESS TO APPROVED CAD DRAWINGS AND CAD MODEL DATA IN YOUR ERP-SYSTEM?

- Colleagues from different departments require access to CAD drawings and CAD models. If this data is saved in PTC Windchill® PDMLink® then it has to be also accessible via the ERP application.
- If interchange formats are requested by other departments, then the designer is distracted and any kind of disruption wastes some of his valuable working time.

## DO YOU SPEND A LOT OF TIME WITH MANUAL DATA MAINTENANCE AND DATA TRANSFER AND DOES THIS LEAD TO MISTAKES?

- In order to enter the reviewer and approval date, it is necessary to open the CAD drawing again and change it. This brings with it the risk that unwanted changes are made.
- Linking approved neutral formats with the relevant documents in SAP® does not happen automatically, but has to be created manually.
- Changes to SAP data have to be harmonized manually on linked PTC Windchill data.

## DO YOU AIM TO HAVE INTER-DIVISIONAL RELIABLE AND CLEAR ACCESS TO APPROVED DESIGN DOCUMENTS?

- Approved drawings and CAD models have to be saved fully automatic without manual intervention in such a way that they can be visualized directly from the ERP system using the article master.
- If interchange formats are required, then these have to be accessible without the assistance of the designer.
- For this purpose, it has to be made sure that only approved versions can be accessed and that only clear versions are made available both during visualization as well as when sending CAD data.
- On the other hand, a designer has to be informed if an important article status has been changed in the ERP system, e.g. if a part is no longer available. In this case, you should immediately see in the PDM system that this part can no longer be used.

## WITH IFCONNEX RELEASE ENGINE, YOU AUTOMATE THE APPROVAL AND CREATION OF NEUTRAL FORMATS AND SYNCHRONIZE THE DOCUMENT VERSION WITH THE ARTICLE MASTER

- The Release Engine ensures that neutral formats of approved CAD drawings are updated in the document record of the ERP system and correspond to the approved drawing. This all allows the ERP user reliable access to the correct versions of the approved design documents.
- If necessary, interchange formats can be provided to the ERP user either upon request or fully automatic in advance.
- If the status of an article changes in such a way that e.g. the use of a part is no longer desired, then the Release Engine can be used to set the lifecycle of the relevant PTC Windchill part or CAD model in PTC Windchill® in such a way that the designer is able to realize this early on. This saves valuable designer time.
- Furthermore, the Release Engine has a number generator which can be used independently of the system to assign article and document numbers.

## WITH IFCONNEX RELEASE ENGINE, YOU SAVE YOUR DESIGNER'S VALUABLE WORKING TIME AND ENSURE COMPANY-WIDE ACCESS TO DESIGN DOCUMENTS

- Avoid manual workload by automating the output process after approval.
- Free your designers from having to hand out drawings and allow them to focus on their actual task of product development.
- Avoid sources of error due to manual interference.



# TECHNICAL INFORMATION

## IFConneX RELEASE ENGINE

### REQUIREMENTS

- PTC Windchill® as of version 10.1
- PTC Creo® Parametric™ as of version 2.0
- Windows according to PTC requirements for PTC Creo® Parametric™

### HARDWARE REQUIREMENTS

The hardware has to meet the requirements of a PTC Creo® Parametric workstation with which even large CAD drawings and CAD models can be opened and converted in an acceptable time frame.

### SCALABILITY / SEVERAL LOCATIONS

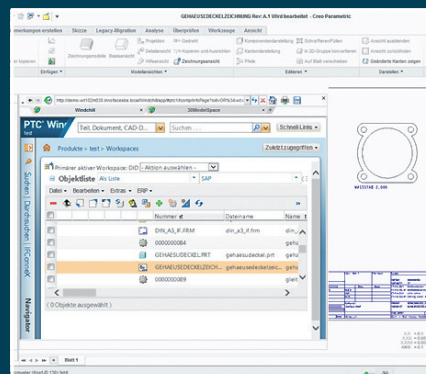
If necessary, further instances of IFConneX Release Engine can be operated to speed up the system. The jobs are distributed according to adjustable criteria. If several locations are used, it may be necessary to provide one Release Engine per location due to limited bandwidth.

ID	Fortgabefrang	TKGDESC
3200	2016-04-20 12:05:25	TKGDESC
3202	2016-04-20 12:05:25	TKGDESC
3206	2016-04-20 12:05:24	TKGDESC
3205	2016-04-20 12:05:24	TKGDESC
3204	2016-04-20 12:05:24	TKGDESC
3203	2016-04-20 12:05:24	TKGDESC
3202	2016-04-20 12:05:23	TKGDESC
3201	2016-04-20 12:05:23	TKGDESC
3200	2016-04-20 12:05:23	TKGDESC
3228	2016-04-20 12:05:23	TKGDESC
3228	2016-04-20 12:04:52	TKGDESC
3227	2016-04-20 12:04:52	TKGDESC
3226	2016-04-20 12:04:52	TKGDESC
3225	2016-04-20 12:04:52	TKGDESC
3224	2016-04-20 12:04:51	TKGDESC
3223	2016-04-20 12:04:51	TKGDESC
3222	2016-04-20 12:04:51	TKGDESC
3220	2016-04-20 12:04:40	TKGDESC
3219	2016-04-20 12:04:40	TKGDESC

**Job 3784**

Objekt: TKGDESC  
 Job: 080DESC  
 Prozess: 3  
 Gewichtung: C  
 Angelegt: 2016-01-25 14:08:46  
 Geändert: 2016-04-20 12:05:24  
 Namebaun: TKGDESC  
 Verarbeitung: TKGDESC / FESTACT / RESTORT  
 Client: PRODUKT\_RE  
 Daemon: SIEMENS\_RE / SIEMENS\_RE  
 Ex. User:  
 Status: FERTIG  
 Ergebnis: 00000004  
 Farbe: 2016-04-20 12:05:24  
 Verarbeitungszeit: 12:00  
 #Läufe: 1  
 Bewertung:  
 Neustart:

**Abhängigkeiten**  
 Vorgänger:



### INNOFACE AG

Steinhäuserstr. 20, 76135 Karlsruhe, Germany  
 Tel.: +49 721 6268730, Fax: +49 721 6268733  
 sales@innoface.de, www.innoface.de

### Enterprise | Application | Integration

Innoface is worldwide one of the leading providers of interfaces that link PTC Windchill® with ERP systems. Our solutions ensure a reliable flow of information between construction and logistics.

PTC® PartnerAdvantage

GOLD