

IFConneX FOR NAV

PTC WINDCHILL-MS-DYNAMICS-NAV-INTERFACE

IFConneX FOR NAV CONNECTS PTC WINDCHILL® WITH MICROSOFT DYNAMICS NAV

MANUAL DATA ENTRY IS OBSOLETE

- Product data is the capital of every company. But there are still companies that synchronize their data manually using isolated solutions.
 - They waste time inputting the same data multiple times at various points across the system, and this results in increased coordinating efforts between departments.
 - Identical parts are sometimes not recognized due to deviant manual entries, which can lead to losses in purchasing.
 - Ambiguous data can lead to purchasing and production errors.
- That is why effective and networked data management systems are indispensable for production companies.

EFFECTIVE DATA MANAGEMENT WITH PTC WINDCHILL® AS PDM SYSTEM AND MICROSOFT DYNAMICS NAV AS ERP SYSTEM

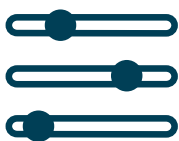
- Only a product data management system (PDM) can efficiently process and manage complex technical data in the field of design engineering and development.
- One of the best-in-class existing solutions, with its versatile CAX interfaces, is PTC Windchill® from the maker of the CAD system PTC Creo®. The link-up of PTC Creo®, in particular, is unbeatable.
- An efficient ERP system is required for logistics and financial data. MS Dynamics NAV is one of the most frequently used ERP Systems in medium-sized companies.

BETWEEN TWO WORLDS

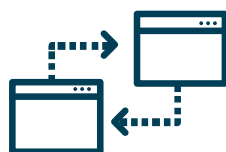
- Isolated operation of the two systems, MS Dynamics NAV and PTC Windchill®, is not enough to guarantee a smooth flow of data for optimum process support in the company. The two systems must be closely integrated.
- The product structure must be displayed in parallel on both systems and kept up to date.
- Changes must be maintained in a timely manner in both systems, to be able to reliably produce and plan.
- Release and change processes for CAD drawings and CAD models must be supported across systems and sites.
- Departments such as purchasing, production and marketing need to visualize released CAD data directly in MS Dynamics NAV.

SYNCHRONIZED DATA ACROSS DEPARTMENTS AND SYSTEMS THANKS TO IFCONNEX

- The IFConneX interface for NAV allows seamless, cross-system modeling of engineering processes in the PTC Windchill® and Microsoft Dynamics NAV systems.
- It is easy to operate using menus in PTC Windchill®.
- At the press of a button, relevant parts in PTC Windchill® are created as article masters in Microsoft Dynamics NAV or linked with existing article masters.
- A link to the visualization data for CAD model and CAD drawing generated in PTC Windchill® can be saved to the NAV item to allow NAV users a visualization of the CAD data.
- The part structure can be transferred automatically to NAV as an article item list. If the CAD structure and the associated part structure in PTC Windchill® change, then the interface ensures for a harmonization with the NAV unit list at the press of a button.
- This integration means that it is possible to implement a cross-system release and change process.
- IFConneX for NAV is configurable and permits flexible and efficient adaptation to customer-specific data and processes.



Controllable



Bidirectional Synchronization



Configurable



Real-time Operation

TECHNICAL INFORMATION IFConneX FOR NAV

STANDARD FUNCTIONS OF THE NAV INTERFACE

Supported objects in NAV

- Article master record
- Article unit list

In PTC Windchill®

- Product
- Part
- Part structure
- CAD document
- Other documents
- Change request
- Change notice
- Promotion Request
- Baseline

Functions NAV article master

- Creating, changing of article master records
- Harmonization of fields based on PTC Windchill attributes
- Configurable mapping

Functions NAV unit list

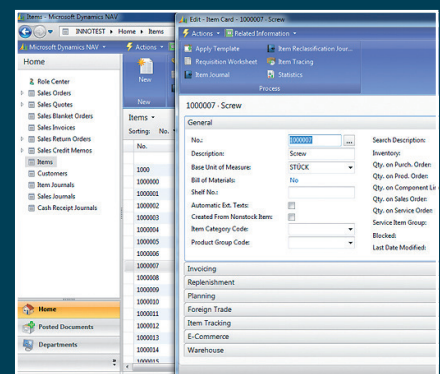
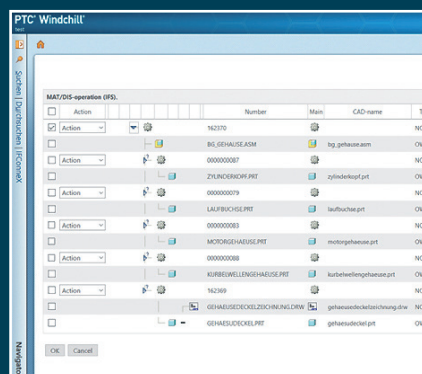
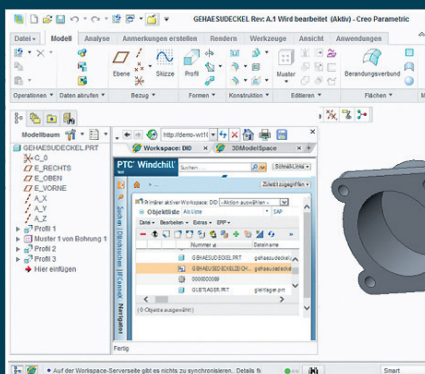
- Creating article unit list based on CAD model structure or part structure (WTPart structure)
- Consideration of different position types
- Harmonization of unit list fields such as
 - position numbers
 - quantity
 - unit
 - additional quantity
 - additional attributes

Functions NAV changes

- Control of article version
- Consideration of change numbers
- Control of changes from PTC Windchill® change workflow

PTC Windchill-functionality

- Control options from PTC Windchill®
 - NAV workspace menu
 - Action menu on the object
 - Display of NAV menu possible in other views
- Event-driven actions from PTC Windchill®
 - Attribute inspection at check-in
 - Increase the life cycle
 - Generate new versions
 - Configurable initialization of attributes for save as event
 - Inspection of the number and/or file name from the rename-event
 - Create or release the change notification
 - A range of other events can be used
- Features in the PTC Windchill Workspace
 - Read system attributes
 - Read user-defined attributes
 - Write user-defined attributes
- Further functions in PTC Windchill®
 - Automatic renaming of CAD documents and parts according to corporate guidelines
 - Cancellation of an event, e.g. check-in
 - Feedback via the event manager



TECHNICAL INFORMATION

IFConneX FOR NAV

OPERATING SYSTEM

The PTC Windchill - NAV interface is installed in the context of PTC Windchill®. The operating system conforms to the specifications for PTC Windchill®.

TECHNICAL PREREQUISITES

MS DYNAMICS NAV

- PTC Windchill® as of version 10.1
- Microsoft Dynamics NAV as of version 2009

LINKING OF SEVERAL SYSTEMS

The interface allows the connection of several ERP systems to a PTC Windchill® system.

ADDITIONAL MODULES TO INTERFACE

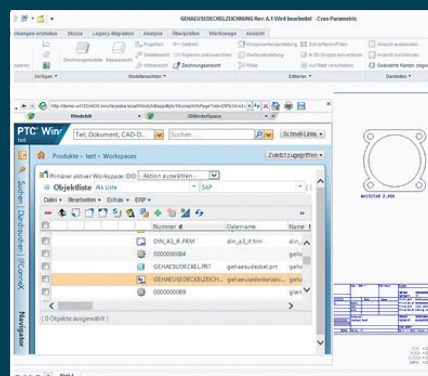
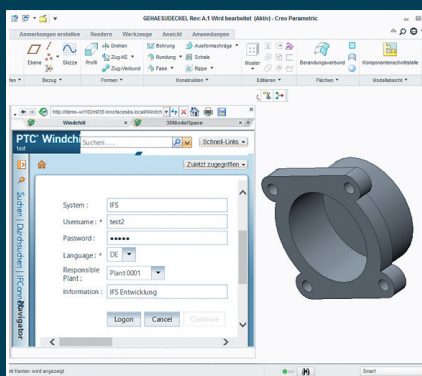
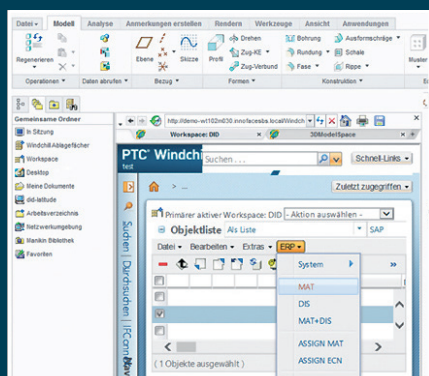
IFConneX RELEASE ENGINE (IFRE)

- Automated generation of visualization or exchange formats from PTC Creo® Parametric™ models and drawings in the background
- Control of the Release Engine from PTC Windchill® or Microsoft Dynamics NAV
- Configurable neutral formats such as HPGL, TIFF, PDF, DXF, STEP, IGES
- Support for multiple drawing sheets
- Reading or updating of ERP relevant PTC Creo® Parametric™ parameters

- Automatic generation and export of neutral formats
- Bidirectional synchronization of the release process in PTC Windchill® and Microsoft Dynamics NAV
- Automated notification via email
- Stamping of additional information on CAD drawings
- Digital signature for PDF

NUMBER GENERATOR (IFRE_NG)

- Automated assignment of part and document numbers
- Setup of multiple number generators
- Context-related number assignment
- Classifying number allocation



INNOFACE AG

Steinhäuserstr. 20, 76135 Karlsruhe, Germany
Tel.: +49 721 6268730, Fax: +49 721 6268733
sales@innoface.de, www.innoface.de

Enterprise | Application | Integration

Innoface is worldwide one of the leading providers of interfaces that link PTC Windchill® with ERP systems. Our solutions ensure a reliable flow of information between construction and logistics.

PTC® PartnerAdvantage

GOLD